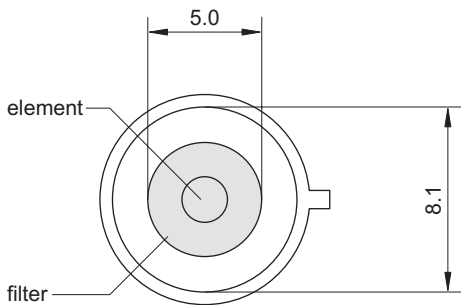
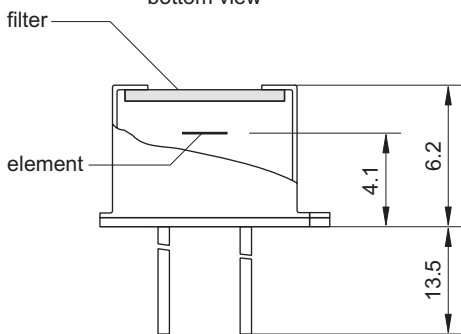
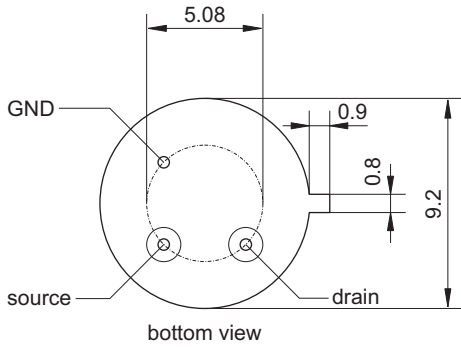


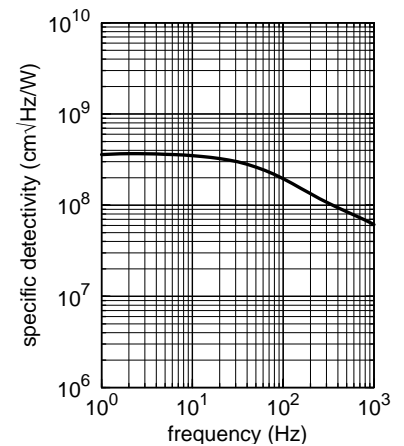
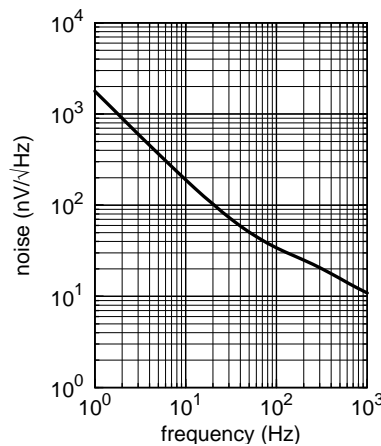
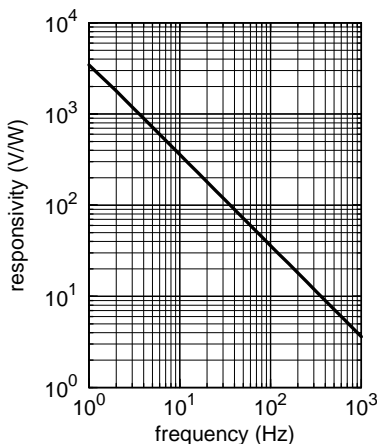
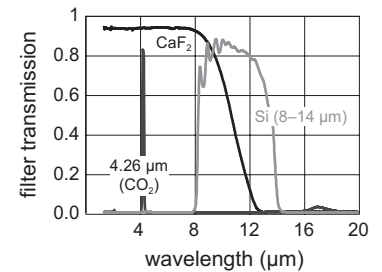
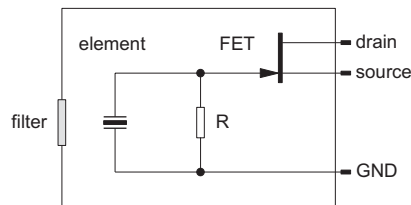
LT D2

Pyroelectric Single Element Detector for Measurement Applications



| | |
|-------------------------------------|------------------------------|
| element size | ∅ 2 mm |
| aperture | 5.0 mm |
| filter ³ | custom-designed |
| responsivity ^{1,2} | >360 V/W |
| noise ¹ | <190 nV/√Hz |
| specific detectivity ^{1,2} | >3.5·10 ⁸ cm√Hz/W |
| offset voltage | 0.4 to 1.5 V |
| operating voltage | 2 to 18 V |
| housing | TO 39 |
| operating temperature | -20 to 70 °C |
| storage temperature | -20 to 70 °C |

1) frequency: 10 Hz, detector temperature: 25 °C
 2) black body source temperature: 500 K, filter transmission: 100 %
 3) other filters on request



Further developments may entail modifications of indicated data without notification. Revision 08/2008. 05082008 ltd2_eng