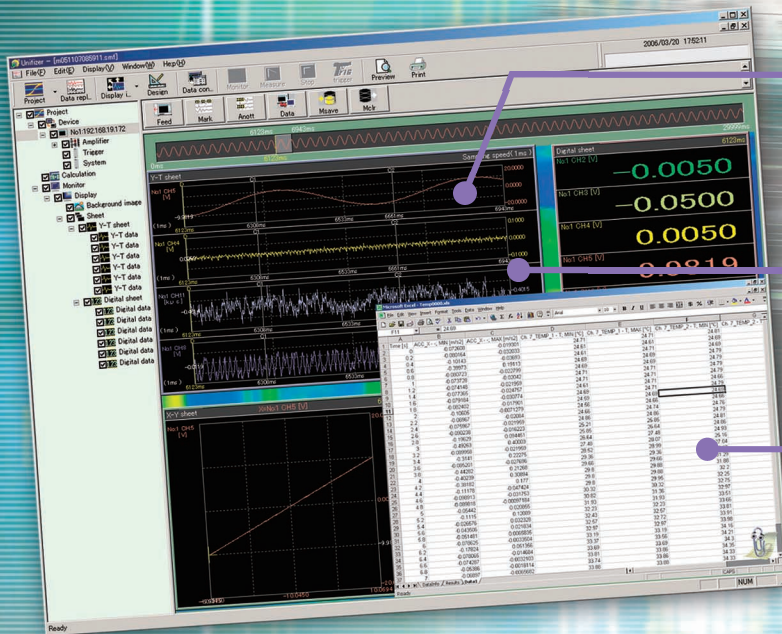


NEW

NEC

# Platform Software for RA2300 Unifizer NS3100

Connects RA2300 and the PC at existing LAN environment, and enables to remote control functions as data recording and various settings.

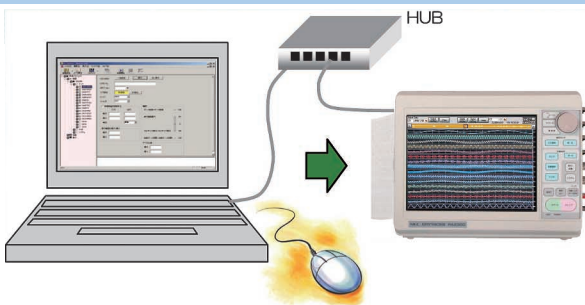


● Users can change layout of windows for displaying data such as digital data, Y-T and X-Y waveforms and bitmap.

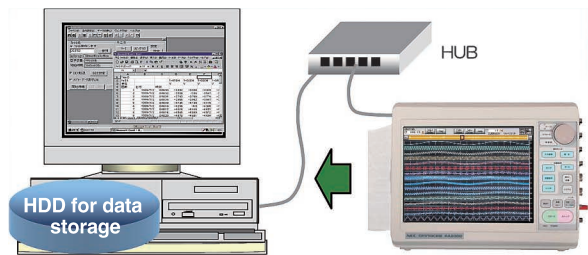
-Change scale of waveform display  
-Read cursor value and time between cursors  
-Scroll display

● Users can convert displayed waveform data into CSV file and save. The CSV file can be imported into Excel and other spreadsheet software

● Operations such as setting of RA2300 and start of measurement can be controlled from the PC at remote location.

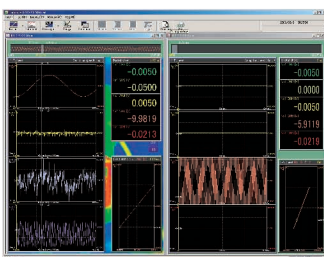


● Enables RA2300 to work as a front-end device and transfer/save measured data at real time on HDD of the controlling PC (Max 1ms)



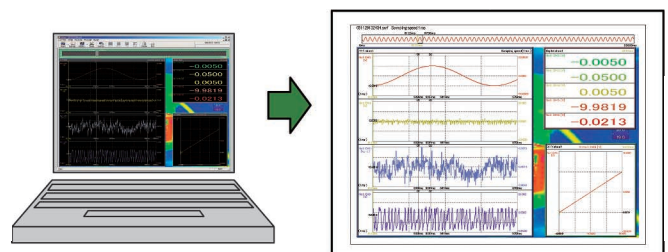
※Max capacity: up to approx half the free space of designated HDD of the PC

● Multiple measured data files can be replayed simultaneously for data comparison. Also, replayed data can be used for various calculations.



- Calculations between channels
- Power
- Square root
- Absolute value
- Common logarithm
- Exponent
- RMS
- Trigonometric function
- Moving average

● Users can generate reports of measured data easily.



NEC San-ei Instruments, Ltd.

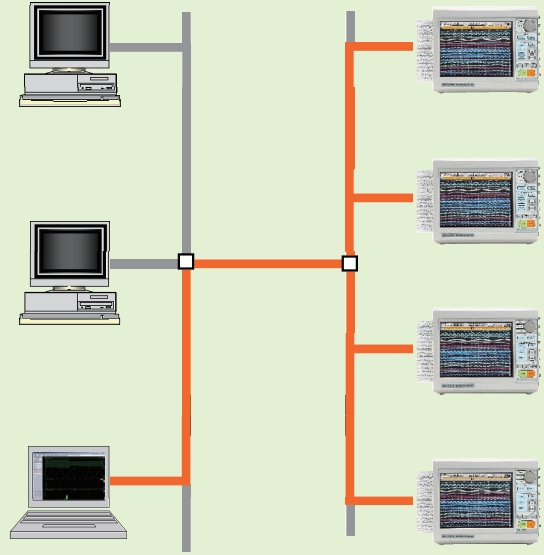
## ◆ Specifications

Required OS	•Windows2000/XP
Applicable Model	•RA2300
Interface	• LAN • Maximum units to control: up to 4 units
Remote Control Mode of RA2300	• Pen recorder mode • HD recorder mode • Memory recorder mode • Multi recorder mode • X-Y recorder mode
Real-time Data Transfer Speed	• <b>1ms to 1000ms (1ms step), 1 sec or over</b> • <b>Max capacity: up to approx half the free space of designated HDD of the PC</b> **Recommended CPU: 2GHz or better. Data transfer may be slower than the speed set by the PC CPU.
Real-time Data Display	• Y-T waveform, X-Y waveform (division or overlap displays), digital
Display of Replayed Data	• Y-T waveform, X-Y waveform (division or overlap displays), digital • Data recorded on mainframes of RA1000 and RA2300. Extensions that can be replayed: .FSD, .FPP, DRT
Cursor Information	• Readings of value, time/amplitude differences of cursor 1 & 2. <b>Max and min values between cursors.</b>
Arithmetic Functions	• Calculations between channels, power, square root, absolute value, common logarithm, exponent, RMS, trigonometric function, moving average.
File Conversion	• Conversion to CSV file
Saving/Reading of Recording Condition Files	

## ◆ Configuration

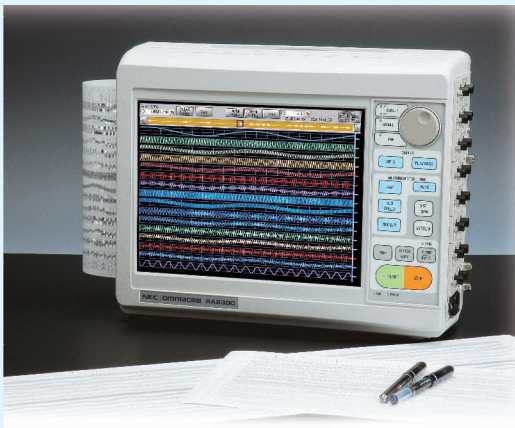
### <Remote control via LAN>

- Any PC can control multiple RA2300s via LAN (up to 4 RA2300s)



Item	Model	Description
Unifizer RA Basic Set	NS3100-P01	For Windows 2000 or XP

## Data Acquisition System RA2300



### Unique & Easy "Pen Recorder" Mode

Easy operation like a pen recorder by the touch panel and virtual amp controls.

### Large 12.1" Display

12.1" TFT color LCD for better visibility of measured data

### Direct Sensor Inputs

11 amplifiers for various signals: voltage, strain, temperature, vibration, pressure, F/V, etc.

### Long-term Continuous Recording on HDD

Built-in 40GB HDD provides 120 days recording at 10ms sampling on 16 channels

### Fast-speed Printer as Standard

Fast printout up to 100mm/sec

\*\*Specifications are subject to change without prior notice.



### CAUTION FOR SAFETY

Please read "WARNING" & "CAUTION" in the operation manual attached to the product carefully for proper operation before using the product.

NEC San-ei Instruments, Ltd.

1-25-12, Akebono-cho, Tachikawa-shi,  
Tokyo 190-8537, Japan

Phone: +81-42-522-0529

Fax : +81-42-522-0538

E-mail: [osd@necsan-ei.co.jp](mailto:osd@necsan-ei.co.jp)

Web : <http://www.necsan-ei.co.jp/osd/>

# NEC

catalog ref : 053

Distributor:

## M E T R U M

INFORMATION STORAGE

Metrum Information Storage Ltd

The Stables, The Grange Centre, 24 Barkham Ride,  
Finchampstead, Berkshire RG40 4EU

Tel: +44 (0)118 9733000 Fax: +44 (0)118 9734363

E-mail: [enquiries@metrum.co.uk](mailto:enquiries@metrum.co.uk) [www.metrum.co.uk](http://www.metrum.co.uk)