

Infrared Thermal Imager Thermo Tracer TH7716

Affordable with visual/thermal image fusion function



Manual Focus



Thermal



Visual



Fusion

High performance UFPA detector

160x120 pixels microbolometer

Visual/thermal image fusion function

Measures visual and thermal images simultaneously and displays fused image for easily identifying area of interest.

Laser pointer

For easy determination of a measuring spot.

Flip-up 3.5" color LCD

Reflective/transmissive LCD for clear view at indoors or not. Flip-up mechanism allows users to adjust the LCD position as they want.

Temperature measuring range

-40°C to 500°C
Range 1 : -40°C to 120°C
Range 2 : 0°C to 500°C
Resolution : 0.1°C (at 30°C, Range 1)

Large storage capacity

Stores up to 4000 images in on-board memory. (SIX format)

Basic performance

Resolution: 0.1°C (at 30°C)
Accuracy: ±2% (of reading) or ±2°C
Battery life: Approx. 3 hours (typ)

Easy operation

Large control buttons for one-handed operation.
Multilingual menu: English, French, German, Italian, Japanese, Korean, Portuguese, Russian, Spanish, Simplified Chinese, Traditional Chinese, Finnish, Danish, Swedish, Norwegian and Dutch.

Robust design

Dust/splash-proof: IP54
Vibration-proof: 29.4m/sec² (3G)
Shock-proof: 294m/sec² (30G)

Specifications

Measuring range	Range 1	-40 to 120°C
	Range 2	0 to 500°C
Resolution	0.1°C (Range 1 at 30°C)	
	0.7°C (Range 2 at 30°C)	
Accuracy	±2°C or ±2% of reading, whichever is greater	
Detector	Uncooled focal plane array (microbolometer)	
Spectral Range	8 to 14μm	
Thermal Image Pixels	160 (H) × 120 (V) pixels	
Focusing Range	30cm to infinity	
I.F.O.V.	2.1mrad	
Field of View	19.1° (H) × 14.3° (V)	
Display	3.5-inch color LCD	
Battery Life	Approx. 3 hours (at 20°C, RUN mode, LCD backlight off)	
Frame Time	8.5 frames/sec	
Image Storage Capacity	Up to 4000 images (SIX format) (SIT&SIX file format: thermal & visual)	
Env. Temp. Correction	Provided (including interval NUC)	
Background Compensation	Provided	
Ambient Correction	Provided	
Focus	Manual Focus	
Thermal/Visual Image Fusion	Provided	
Image Processing Functions	Temperature display (1 point, movable) Emissivity correction (1 point, movable)	
Display Functions	Display color: color/monochrome, positive/negative Gradation : 16, 32, 64, 128, 256 Color palette: rainbow, brightness, shine, hot-iron, medical, fine	
Laser Pointer	Class 2 (1mW/650nm red)	
Video signal output	NTSC/PAL, composite video signal, S-video	
Interfaces	USB 2.0/1.1 (Mass storage available)	
Operating temperature	-15 to 45°C, 90% RH or less (not condensed)	
Storage temperature	-40 to 70°C, 90% RH or less (not condensed)	
Power supply	AC adaptor: 100 to 240V, DC 7.2V (nominal)	
Power consumption	Approx. 5W (typ)	
Shock & vibration	Shock : 294m/sec ² (30G) (IEC60068-2-27) Vibration: 29.4m/sec ² (3G) (IEC60068-2-6)	
Environmental protection	IP54 (IEC60529)	
Dimensions	Approx. 102 (W) × 217 (H) × 205 (D) mm (excluding projections)	
Weight	1.3kg (including battery and LCD)	
Standard accessories	AC adaptor, battery pack (2 pcs), battery charger, wrist strap, lens cap, carrying case, viewer software, USB cable, operation manual	

**Specifications are subject to change without prior notice.

**Described company name and model are brand name or registration of trademark.

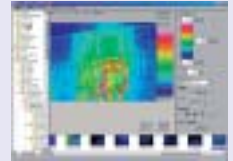
Visual Camera

Effective image pixels	640 (H) × 480 (V) pixels
Field of view	27.0° (H) × 20.0° (V)
Focus	Pan focus
Focusing range	50cm to infinity
Auto exposure	Provided

Applicable Software

Viewer Software NS9205 (standard)

Thermal image playback
 •Temp display setting
 •Visual image display
 •Point temp display (up to 20 points)
 Data conversion: JPEG, BMP, AVI
 Download of thermal image data from internal memory.



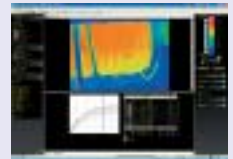
Report Generator NS9200 (optional)

Helps to make reports easily with thermal images and temperature data on MS Word and Excel.
 Fusion of thermal and visual images.
 Subtraction (Entire image, specified area, like-figures)
 File management by database.
 Detects abnormal temperature by max/min temperature display.
 Direct data transfer to MS Excel.



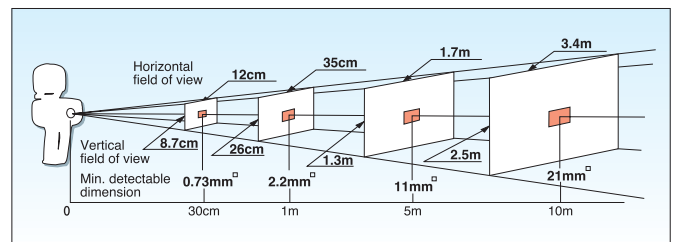
Image Processor Pro NS9300 (optional)

Thermal/visual image fusion.
 Patchwork (Integrates multiple thermal images into one and enables data analysis)
 Sequence editor (Converts multiple thermal image files into thermal movie files)
 Report generation (MS Word, MS Excel, HTML and MRT)
 Data output (Excel, BMP, JPEG and AVI)



**NS9300 is available only for OFF line.

Field of View Diagram (Thermal image)



CAUTION FOR SAFETY

Please read "WARNING" & "CAUTION" in the operation manual attached to the product carefully for proper operation before using the product.

NEC Avio Infrared Technologies Co., Ltd.

1-5, Nishi-Gotanda 8-chome, Shinagawa-ku,
 Tokyo 141-8535, Japan
 Phone: +81-3-5436-1614
 Fax : +81-3-5436-1395
 E-mail: osd@nec-avio.co.jp
 Web : http://www.nec-avio.co.jp/en/

Distributor:

NEC

Catalog ref : NA008

I0804A5 Printed in Japan