



Thermal Imaging Camera

Industry temperature measurement

TE Series

160×120 Uncool FPA detector

Low cost, small size

50Hz real time measurement



TE Series Portable Thermal Imaging Camera

TE series is a special low cost real-time IR camera in 160X120 resolution. It combines the traits of economical practical and portable. The camera symbolizes easy-to-use, standard and professional, developing for those applications that need instant infrared troubleshooting in power plant, petrochemicals, scientific research, fire fighting, and building inspection, metallurgy, etc. .



Color Warning



Voice Alarm

40 seconds of digital voice per image stored with image



Parameter

Item	TE	TE-S	TE-P	
Detector characteristics	Uncooled FPA microbolometer			
	160x120			
Image characteristics	Field of view/min focus distance			
	12°x9°/0.3m			
	Spatial resolution (IFOV)			
	1.3mrad			
	Thermal sensitivity			
	0.12°C@30°C			
	Frame rate			
50Hz		50/60Hz		
Focus				
Manual				
Electronic zoom				
N/A		2X		
Spectral range				
8-14μm				
Image display	Built-in high-resolution color 2.5" LCD			
Measurement	Temperature ranges			
	-20°C~+250°C	-20°C~+250°C, optional up to +500°C	-20°C~+500°C, optional up to +1000°C	
	Accuracy			
	± 2 °C or ± 2% of reading, Whichever is greater			
	Measurement correction			
	Automatic/manual			
	Measurement mode			
	Movable spot, Movable area (maximum, minimum and average temperatures), Isotherm, Alarm (voice, color)		Up to 4 movable spots, Up to 3 movable areas (maximum, minimum and average temperatures), Line profile, Isotherm temperature difference, Alarm (voice, color)	
	Color palette			
	3		8	
Image adjustment				
Auto/manual gain and brightness				
Setup functions				
Date/time, temperature unit, language				
Emissivity correction				
Variable from 0.01 to 1.0 or select from listings in pre-defined material list				
Ambient temperature correction				
Automatic corrections according to user input				
Image storage	Storage card			
	Built-in flash memory, Up to 100 images		Built-in flash memory, Up to 2000 images	
	Storage mode			
	Manual single image saving		Automatic/manual single image saving	
	File format-thermal			
JPEG, 14 bit thermal image with measurement data				
Voice annotation	N/A		Input via built-in microphone Up to 40 seconds of digital voice per image stored with image	
	Laser pointer			
Class 2, 1mw/635nm(red)				
Power supply	Battery type			
	Li-Ion, rechargeable			
	Battery operating time			
	3 hours continuous operation			
	Charging system			
Intelligent charger		Intelligent charger or power supply adaptor (optional)		
Power saving				
YES				
External power				
N/A		10-15V DC		
Environment	Operating temperature			
	-15°C~+50°C			
	Humidity			
≤90% non-condensing				
Physical characteristics	Encapsulation			
	IP54			
Weight	0.6Kg			
	Dimensions			
250mmx100mmx72mm				
Interface	External DC input			
	N/A		Yes	
	Audio output			
	N/A		Yes	
	Video output			
N/A		PAL/NTSC		
USB				
Image, measurement data transfer to PC		Image, measurement data and voice transfer to PC		

▲ The information contained in this document is subject to change without notice



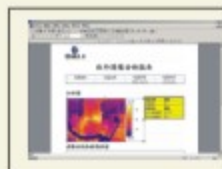
Low power consumption, 3 hours continuous operation



Audio Output
USB Video Output
Power connector

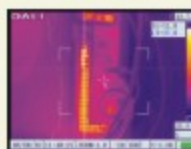


Laser Pointer



Free analysis software

Manual Lens



Line measurement



Area measurement



Optional Lenses